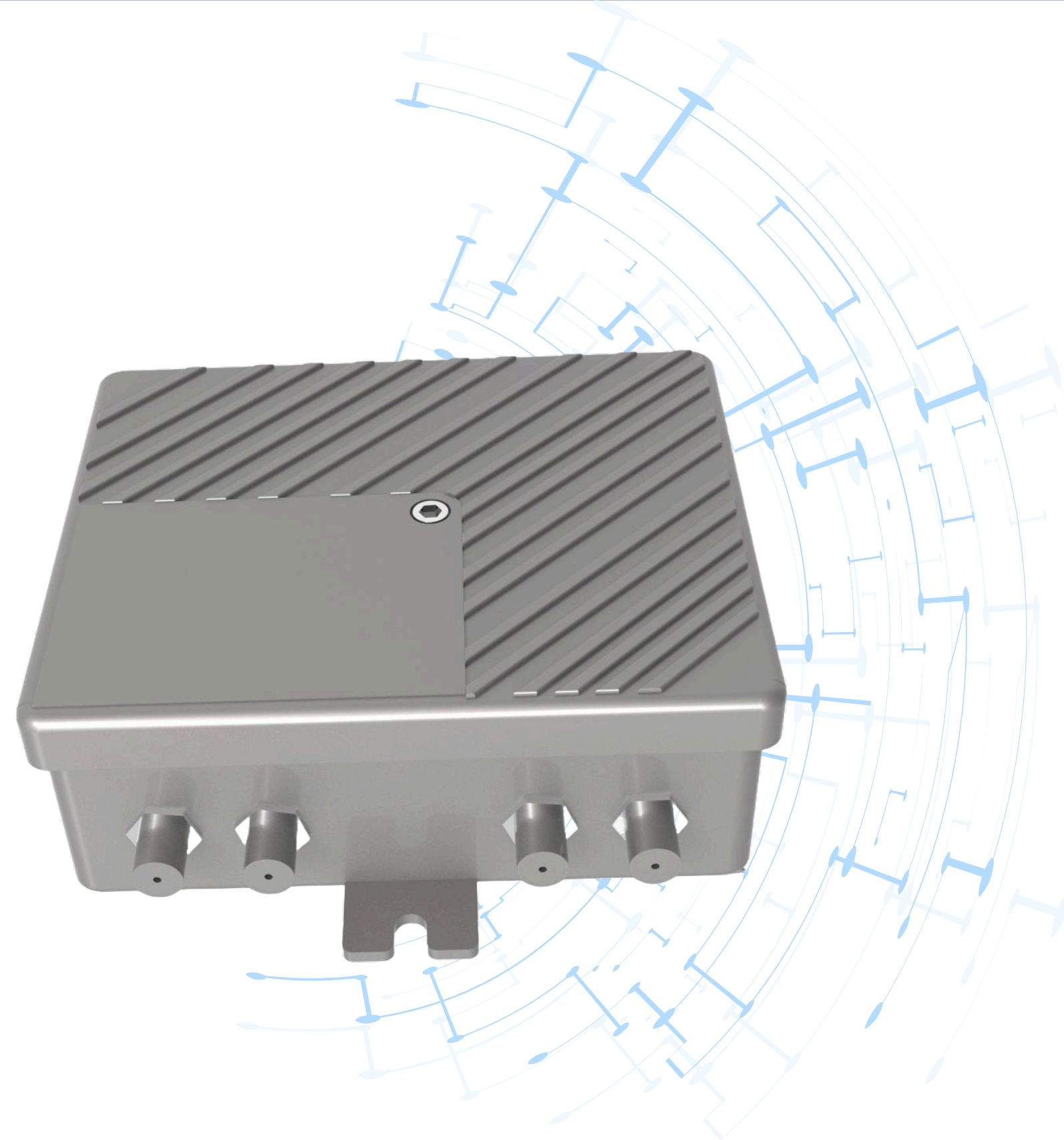


Signal Amplifier

- A signal amplifier receives weak signals from the outside, amplifies them, and then ensures their transmission to devices inside the train. This makes communication services within the train more reliable.
- Si Bipolar Technology
Ideal for small-scale distributions.
- Gain and Slope Gain Adjustment
To achieve the desired distribution conditions, gain adjustment and gain equalizer controllers.
- 110VDC Power Supply
Compatible with all environmental conditions and durable power supply.
- Enclosure Compliant with IP54
High shielding and environmentally resistant aluminum cast housing.
- Input and Output Test Points
Easy testing in the field without interrupting the operation of the device.
- EN 50155 for Railway applications compliance



Specifications

Output	1 RF Output (47-862 MHz / Unidirectional)
Screening	≥70 dB
Surge Protection	Current
Power Supply	110 VDC
Power Consumption	3 Watt
Operating Environment Temperature	(-30)...+50°C
Mechanical System	IP54-rated, metal cast housing
Dimensions and Weight	105 x 125 x 50mm and 0,70 kg

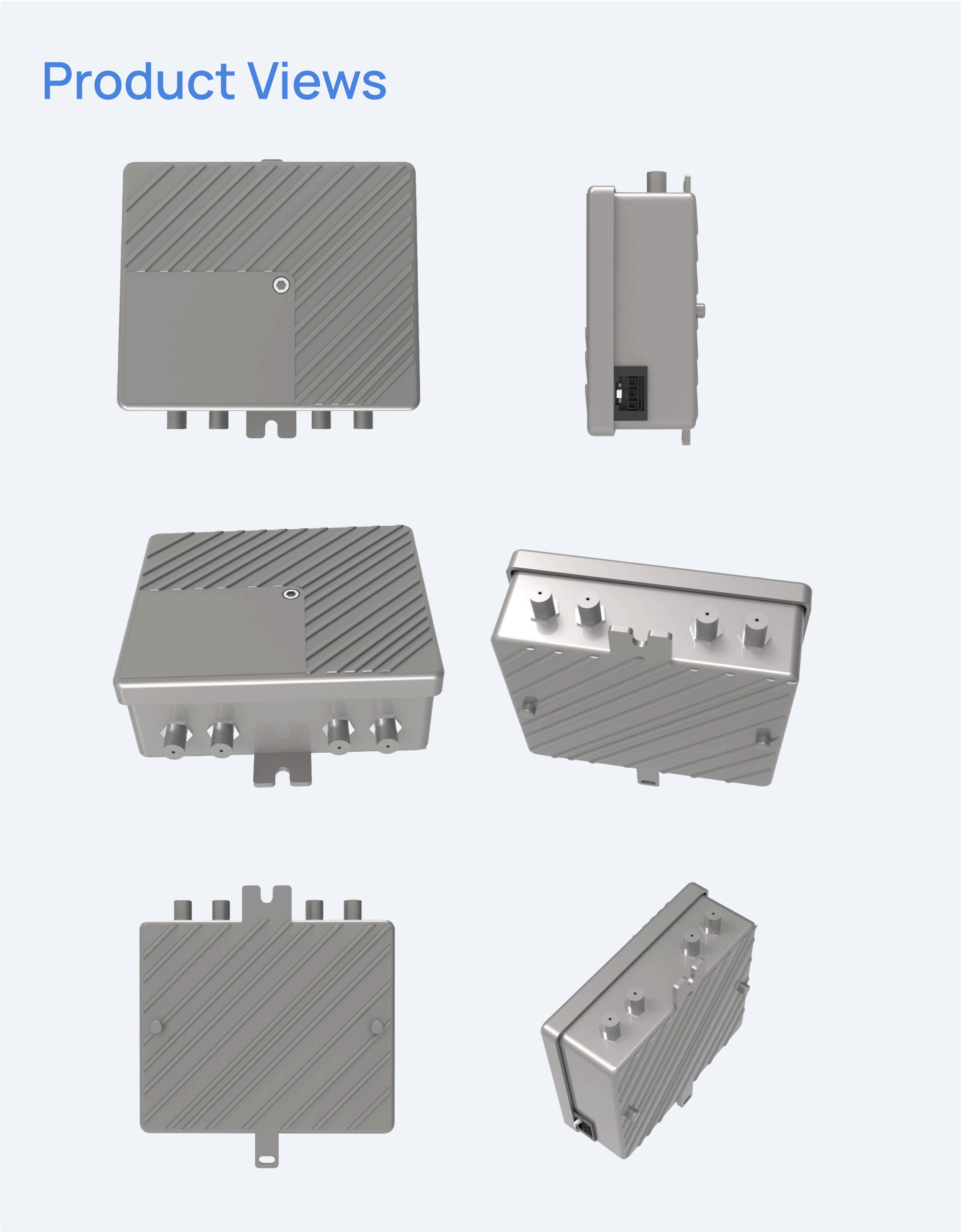
Customization

Customization is available upon your request.

RF Parameters

Down-Stream	
Technology	Si Bipolar
Forward Bandwidth Options	47-862 MHz
Gain	30dB
Gain Accuracy	: +/- 1dB
Gain Control (Input)	0....20 dB adjusted
Gain Stabilizer(Input)	0....20 dB adjusted
RF Test Points	Input/Output -30 Db
Output Level (EN50083-3: CENELEC 42 channels, equal output level)	CTB ≥ 60 dBc 102 dBuV
	CSO ≥ 60 dBc 100 dBuV
	XMOD ≥ 60 dBc 100 dBuV
Noisy	< 7dB
Reflection	Input/Output -12 dB

Product Views



Technical Drawing

